

FOR LEASE

9206 Leslie Street, Richmond Hill, ON



Michael Pearlman · Vice President · Sales Representative ·
C: (416) 567 5101 · O: (905) 607 0719 · pearlmanmichael@gmail.com

www.clearstreamcre.com

Site Features

9206 Leslie Street, Richmond Hill, ON



Leslie Plaza

- The Leslie Plaza is located just off the south west corner of Leslie and 16th Avenue in Richmond Hill.
- The centre is well merchandised with several notable Tenants on site.
- Shopping Centre features over 15,000sf of GLA and has outstanding visibility, as Leslie Plaza's entire frontage faces directly to the street.
- Leslie Plaza is located in the Richmond Hill/Beaver Creek Industrial Node which houses several thousand offices directly surrounding the Shopping Centre.
- Prime End Cap Unit #1 Available. Approximately 3,035 Square Feet.
- Minimum Rent on entire unit starts at \$39.00 per square foot plus Additional Rent estimated at \$11.65 per square foot.

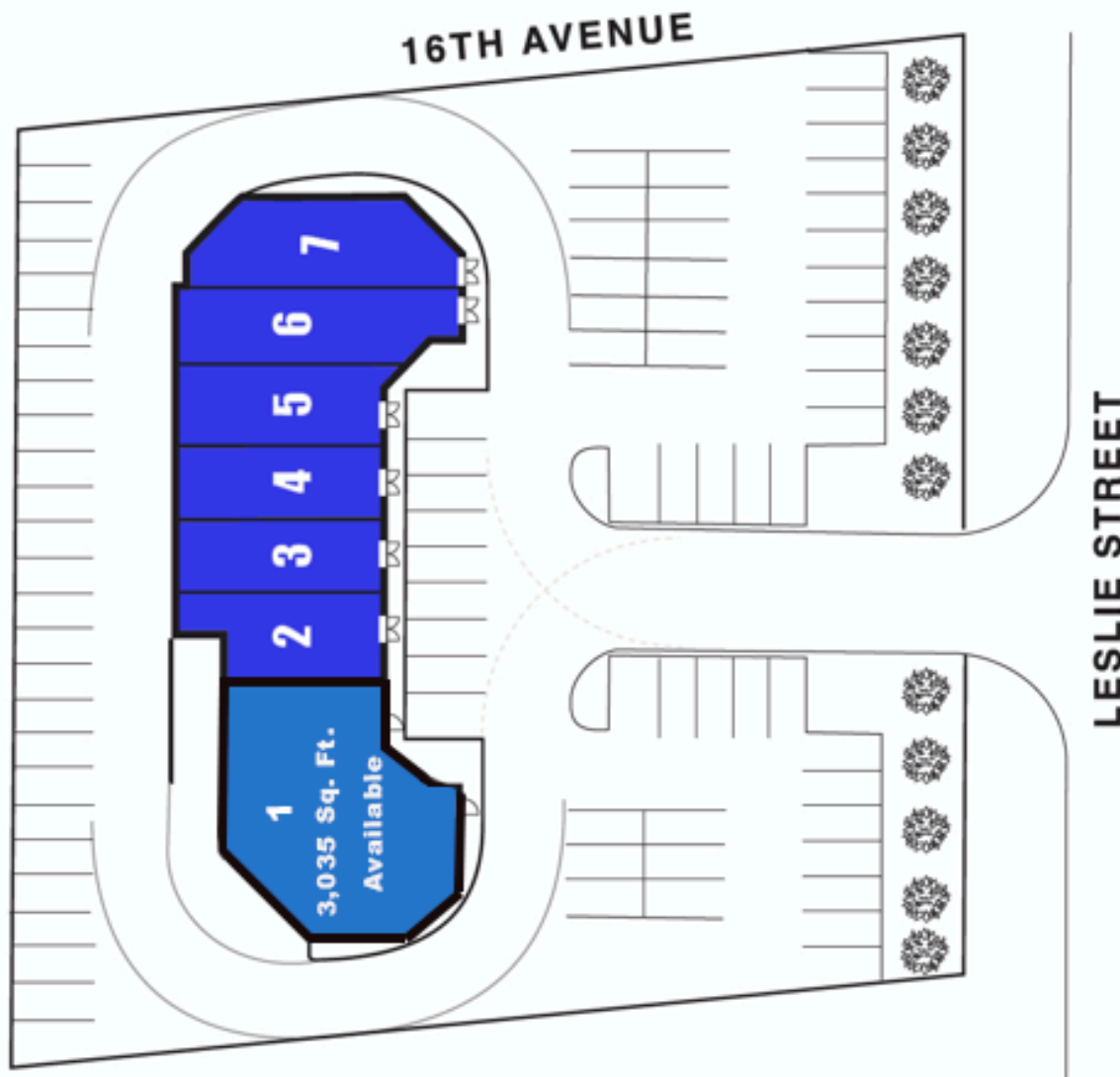
*All units listed are conditional upon the Landlord receiving vacant possession of the Premises.



Unit 1 Available
3,035 Square Feet

Site Plan

9206 Leslie Street, Richmond Hill, ON



nam
VIETNAMESE RESTAURANT

舌尖上的
越南



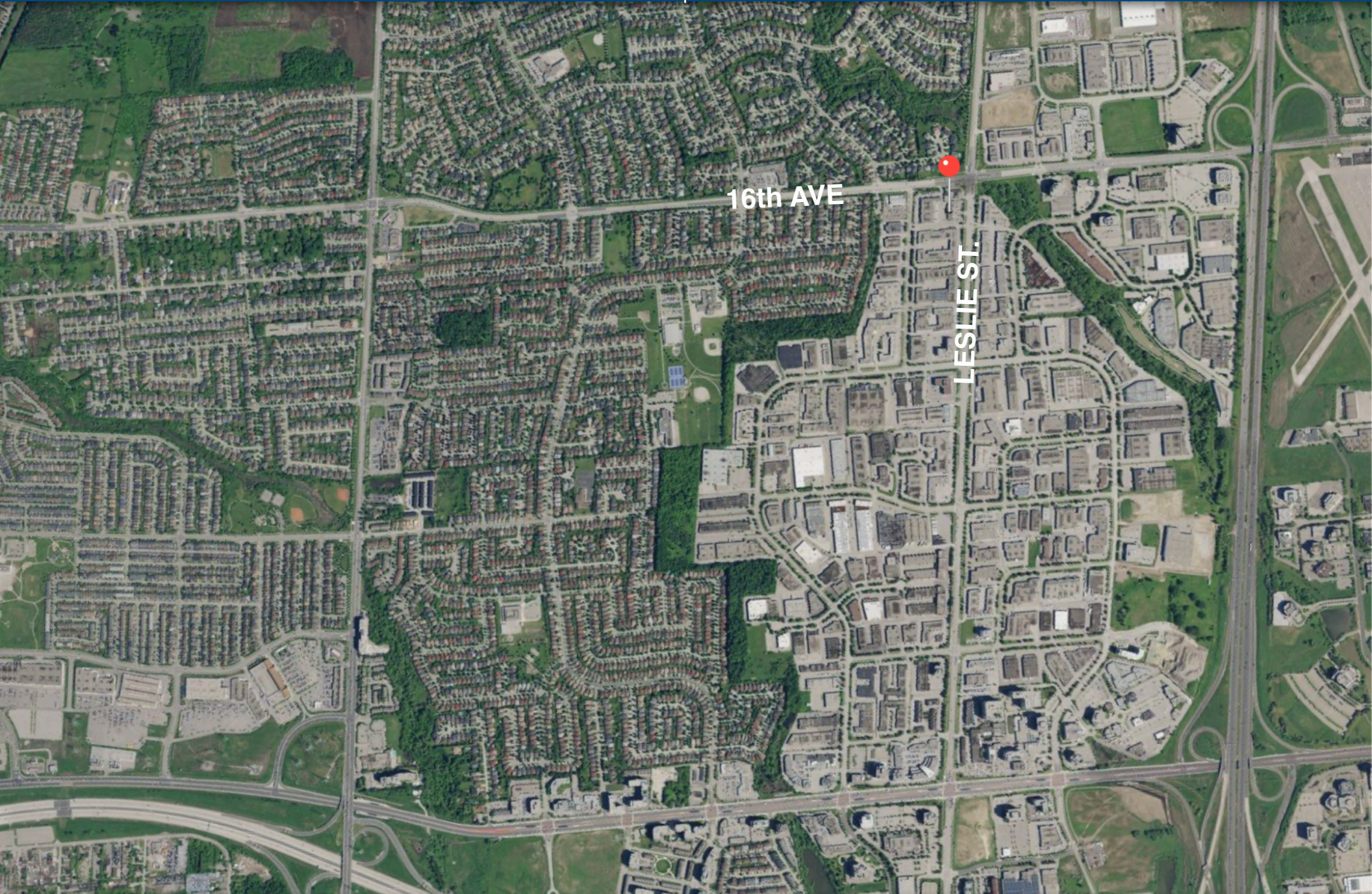
edible
arrangements



ENGEL & VÖLKERS

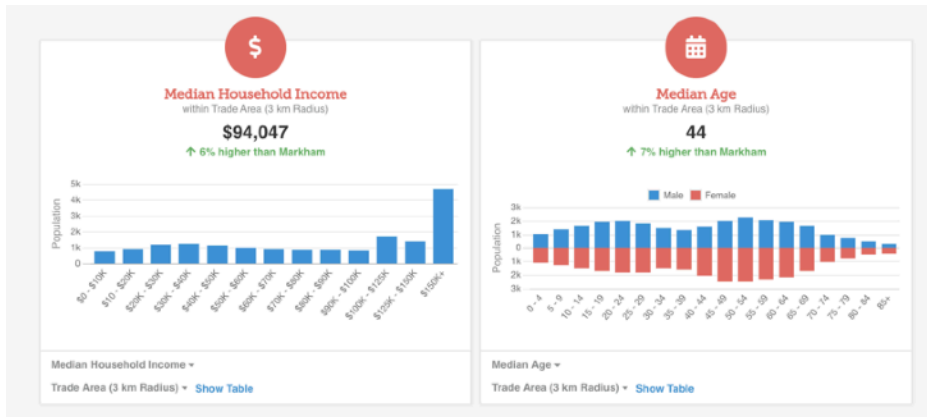
Site Overview

9206 Leslie Street, Richmond Hill, ON

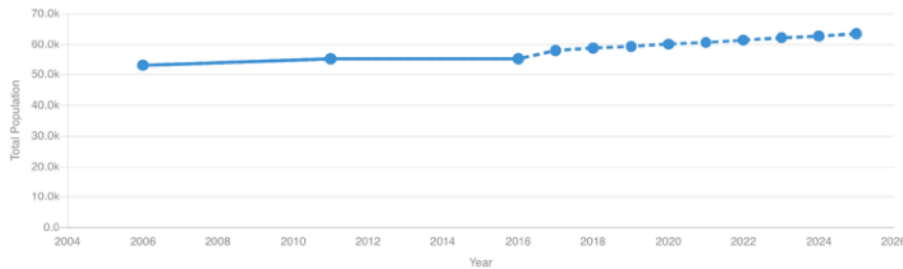


Demographics

9206 Leslie Street, Richmond Hill, ON



Total Population ÷ 3km

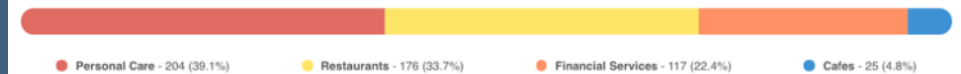


Criteria	2006	2011	2016	2017	2018	2019	2020	2021	2022	2023	2024	2025	Growth
Total Population	53.1k	55.2k	55.1k	57.8k	58.5k	59.2k	59.9k	60.6k	61.3k	61.9k	62.6k	63.3k	19.3%

DEMOGRAPHIC SNAPSHOT

	3K	5K
Total Population	55,102	167,902
Households	17,761	59,042
Average Age	41.7	42.3
Average Household Income	\$115,031	\$106,569

Retail Landscape (Trade Area)



CLEARSTREAM
COMMERCIAL REAL ESTATE LTD., BROKERAGE

Michael Pearlman · Vice President · Sales Representative ·
C: (416) 567 5101 · O: (905) 607 0719 · pearlmanmichael@gmail.com

www.clearstreamcre.com