

FOR LEASE

3132 Eglinton Ave. East, Toronto, ON



Mark Parker • Sales Representative • O:(289) 837 3829 • C:(416) 399 0228

mark@clearstreamcre.com • www.clearstreamcre.com

Site Features

3132 Eglinton Ave. East, Toronto, ON



Scarborough South

Scarborough South Retail is a multi-tenanted retail shopping centre comprised of approximately 103,201 square feet of retail premises, anchored by Walmart Canada. The retail units have high exposure on to Eglinton Ave. E and direct access to parking.



UNIT(S) AVAILABLE

1,509 Sq. Ft.



RENT

Net Rent: Inquire
TMI: Est. \$18.00



POSSESSION

Immediate
Possession



POPULATION

231,940+
Within 5 KM

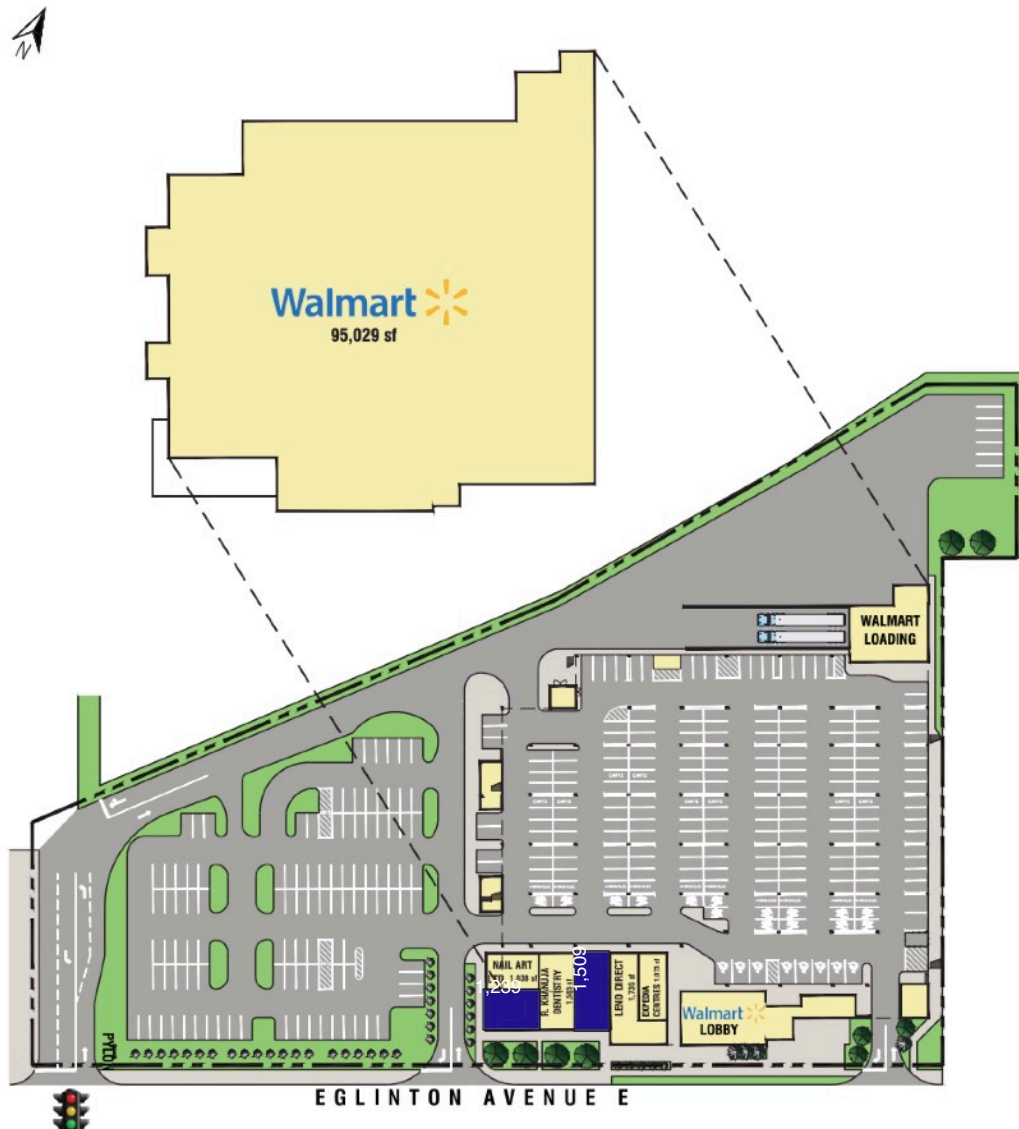


TRAFFIC

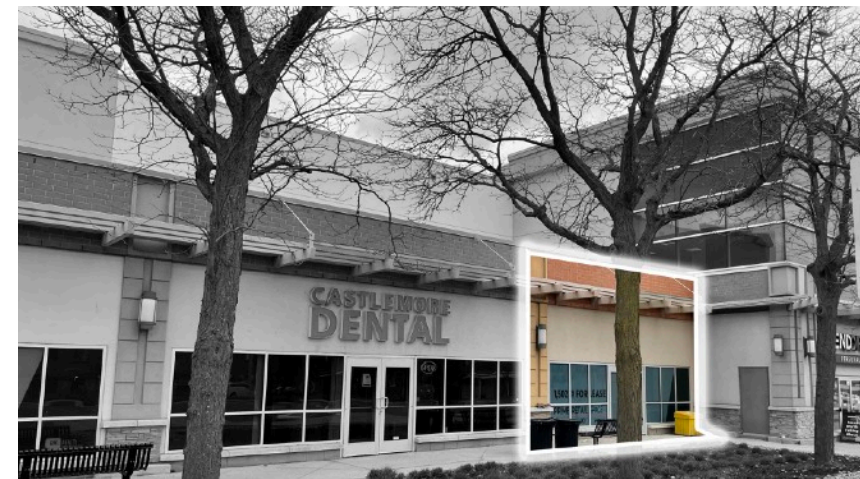
29,264 Vehicles/Day
(Eglinton Ave. E & Markham Rd.)

Site Plan

3132 Eglinton Ave. East, Toronto, ON



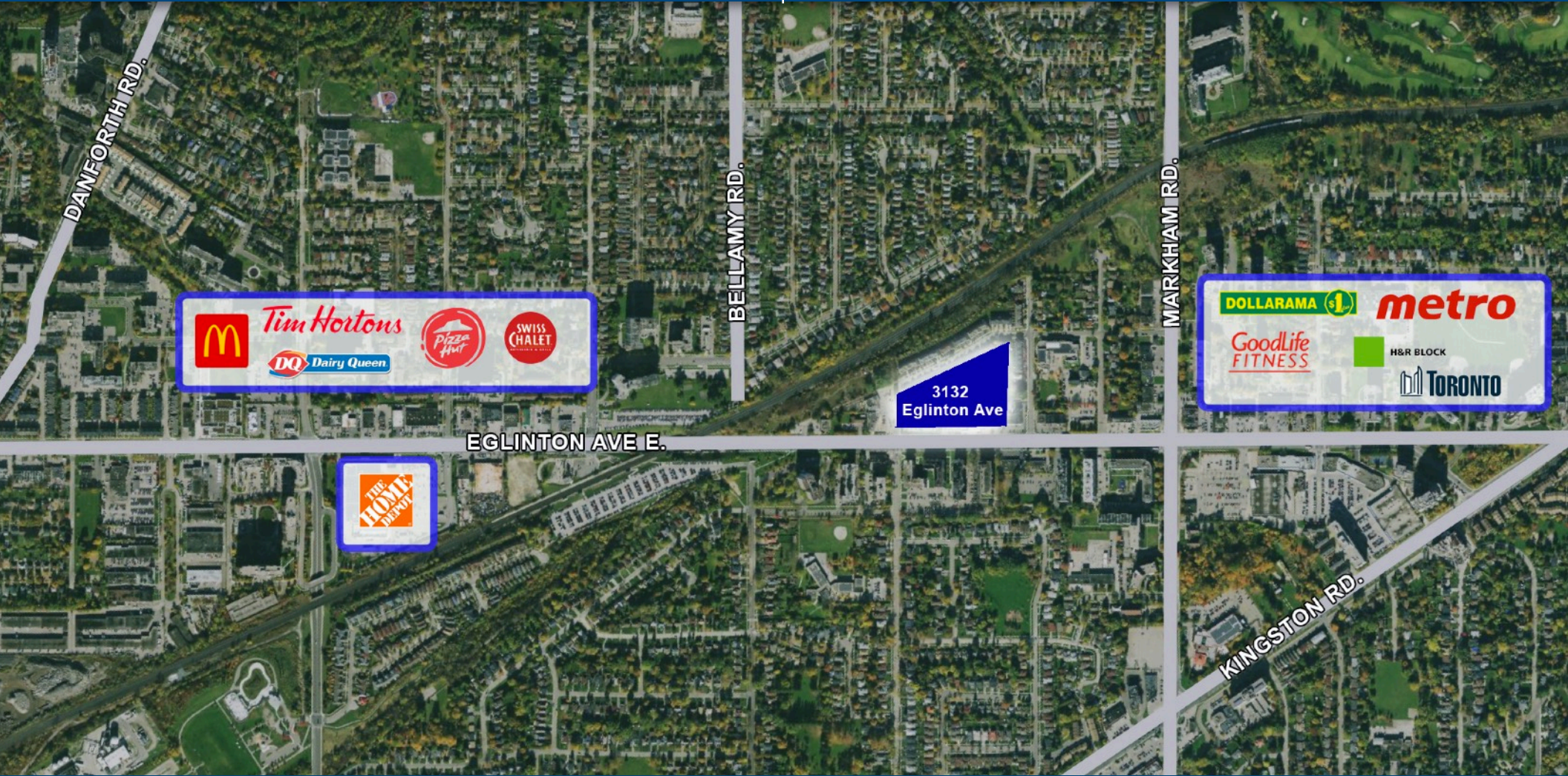
Under Contract



1,509 Square Feet Available

Location Overview

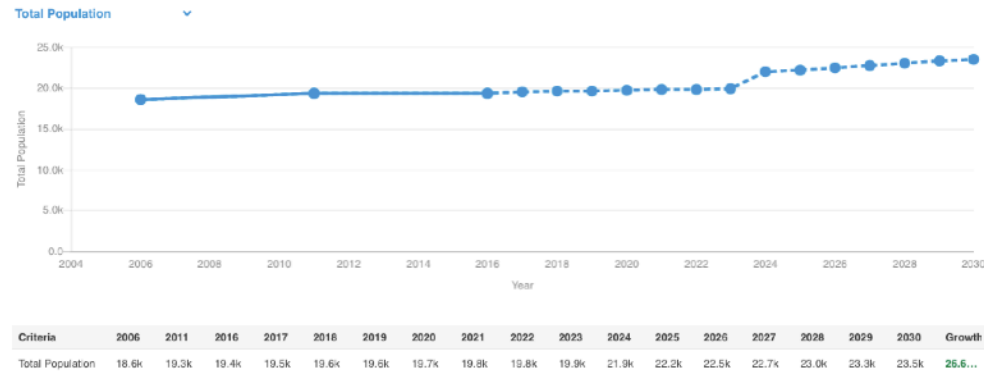
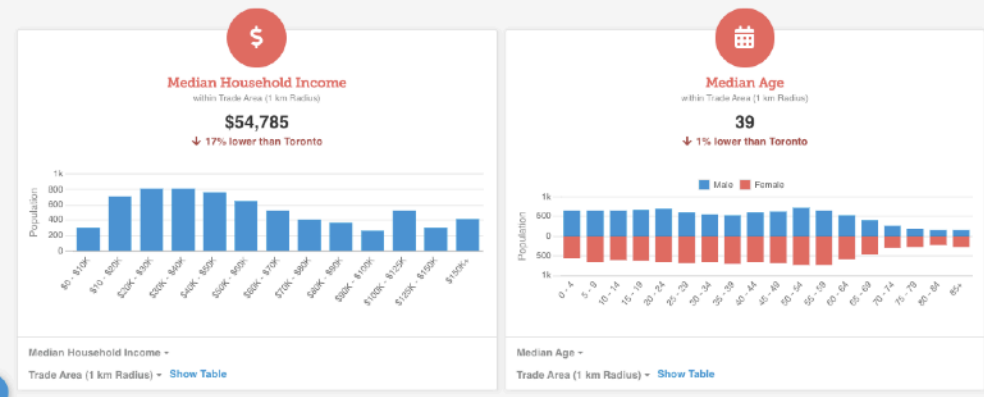
3132 Eglinton Ave. East, Toronto, ON



Demographics

3132 Eglinton Ave. East, Toronto, ON

Demographic Overview



DEMOGRAPHIC SNAPSHOT

	3K	5K
Total Population	102,419	231,942
Households	36,020	83,409
Average Age	40.6	40.3
Average Household Income	\$62,357	\$60,979

Retail Landscape (Trade Area)



3132 Eglinton Ave. East, Toronto, ON



DISCLAIMER

No warranty or representation, express or implied, is made to the accuracy or completeness of the information contained herein, and same is submitted subject to errors, omissions, change of price, rental or other conditions, withdrawal without notice, and to any special listing conditions imposed by the property owner(s). As applicable, we make no representation as to the condition of the property (or properties) in question.