

FOR LEASE

1575 Upper Ottawa St., Hamilton, ON



- Join Many National Tenants Such As Harveys, Swiss Chalet, Wellwise By Shoppers Drug Mart, Sherwin Williams, Pharmasave, And More.
- This Busy Retail Shopping Centre Is Strategically Located At Rymal Rd. And Upper Ottawa St. And Sees High Traffic Volumes.
- Recently Updated With A New Facade.
- The 1,963 Square Foot Unit Has Over 25 Feet Of Frontage With Good Exposure On To Rymal Rd.
- Convenient Ample Parking.

Unit 8: 1,963 Square Feet



Derek Gaudette · Sales Representative

O:(905) 607 0719 · C:(647) 218 9321

derek@clearstreamcre.com

www.clearstreamcre.com



CLEARSTREAM

COMMERCIAL REAL ESTATE LTD., BROKERAGE

Greg Gaudette · Broker Of Record

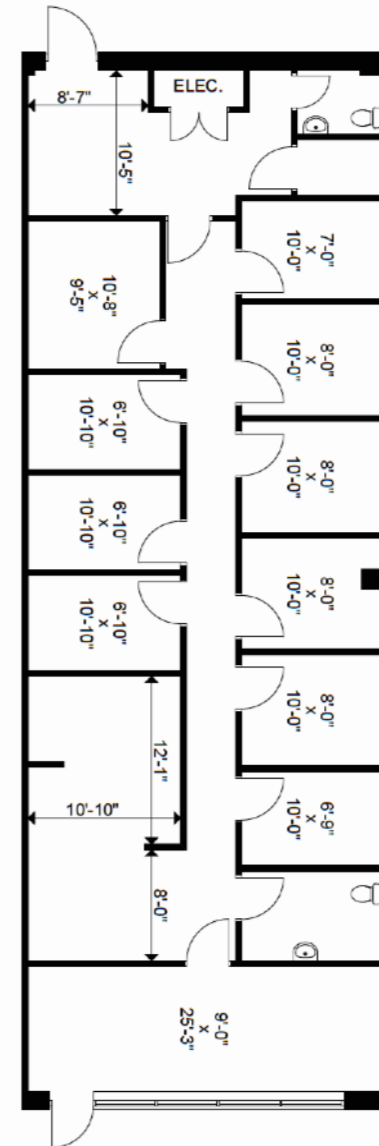
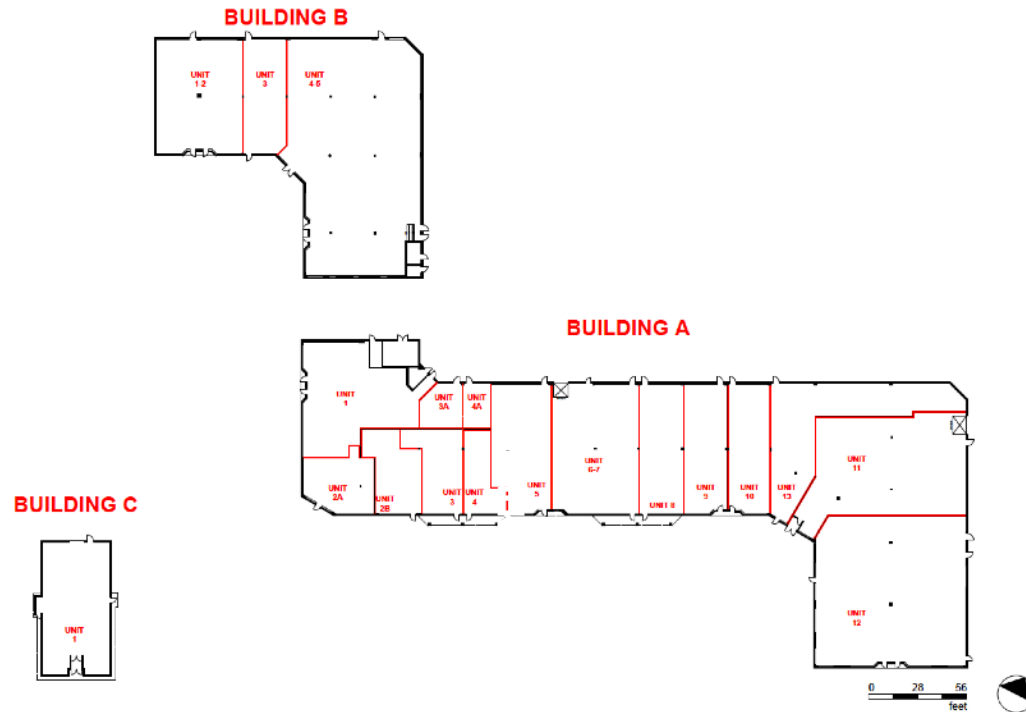
O:(905) 607 0719 · C:(647) 328 7027

greg@clearstreamcre.com

www.clearstreamcre.com

FOR LEASE

1575 Upper Ottawa St., Hamilton, ON



Unit 8: 1,963 Square Feet

Building A

Unit 1: Alzheimer Society
 Unit 2a: Greek Grill Express
 Unit 2b: Dentistry
 Unit 3: City Shawarma
 Unit 4: UCMAS Education
 Unit 5: Parmasave
 Unit 6/7: Sherwin-Williams Paints
 Unit 8: 1,800 Square Feet Available
 Unit 9: True Blue Water & Ice
 Unit 10: Sports Bar and Cafe
 Unit 11: Wellwise by Shoppers

Unit 12: Swiss Chalet
 Unit 13: Hardwood Design Centre

Building B

Unit 1/2: KGC Therapy
 Unit 3: Odyssey Hair Salon & Spa
 Unit 4/5: The Co-Operators

Building C

Unit 1: Harvey's

Demographic Snapshot

Total Population

3KM: 41,960

5KM: 116,723

Average Household Income

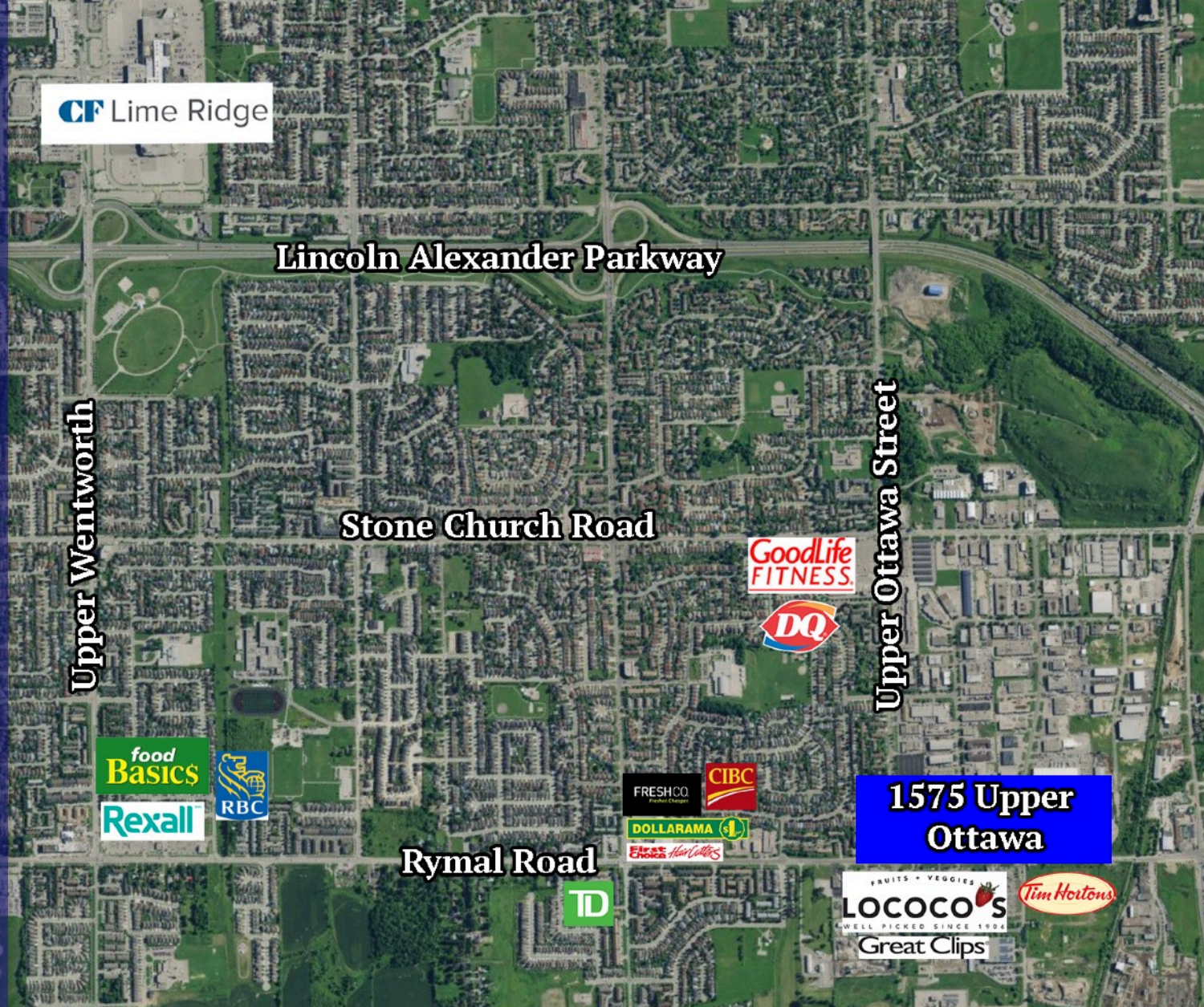
3KM: \$92,870

5KM: \$88,748

Average Age

3KM: 39.2

5KM: 40.9



Derek Gaudette • Sales Representative

O:(905) 607 0719 • C:(647) 218 9321

derek@clearstreamcre.com

www.clearstreamcre.com



CLEARSTREAM

COMMERCIAL REAL ESTATE LTD., BROKERAGE

Greg Gaudette • Broker Of Record

O:(905) 607 0719 • C:(647) 328 7027

greg@clearstreamcre.com

www.clearstreamcre.com